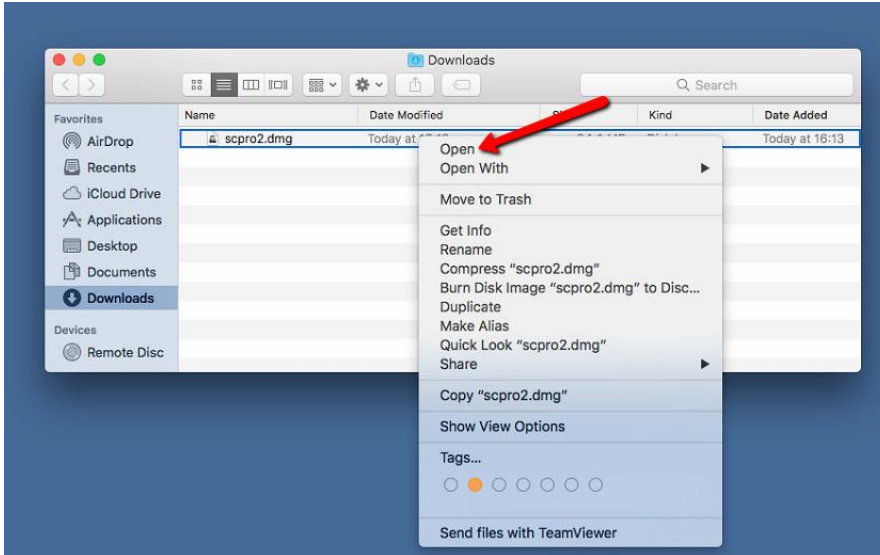


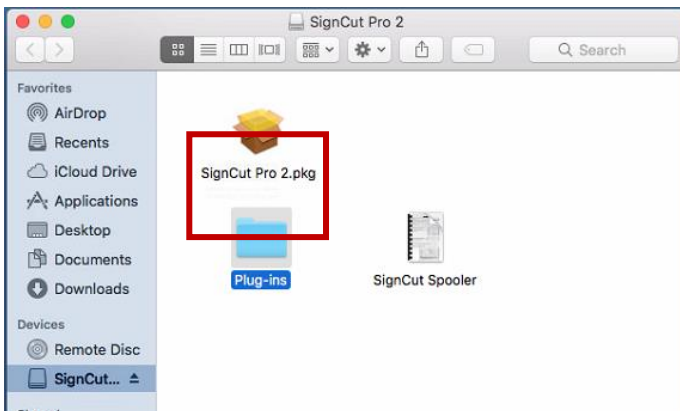


## Install SignCut Pro 2 Mac

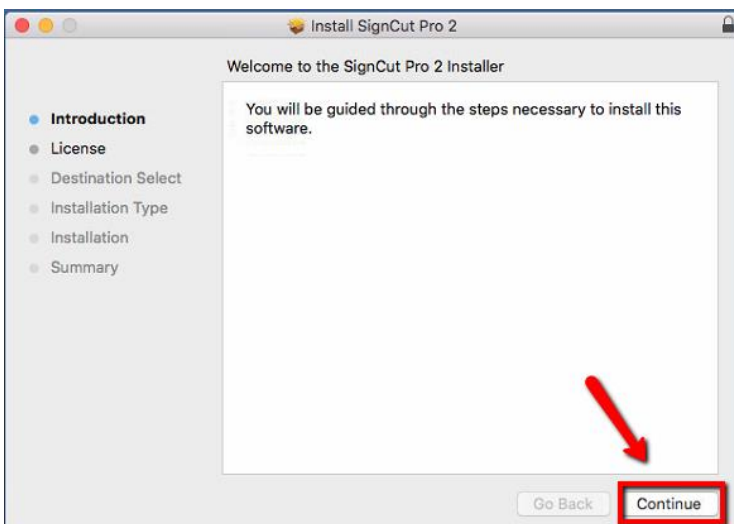
To download SignCut go to: <https://signcutpro.com/download/>  
Click the download button for Mac.



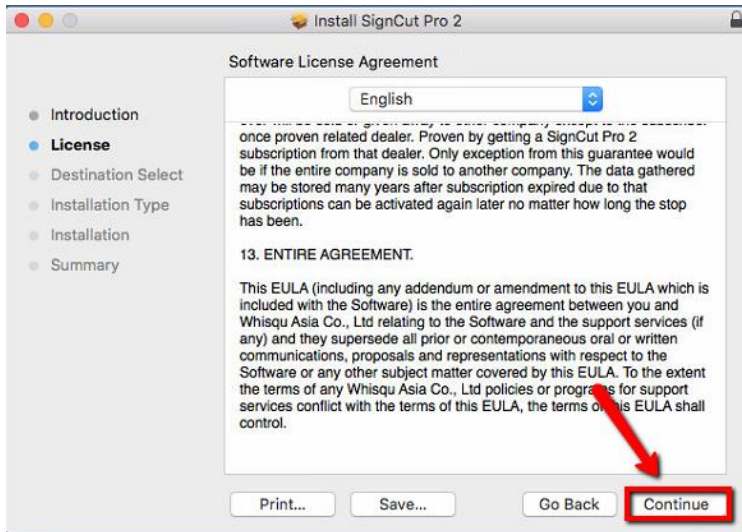
Locate the scpro2.dmg file in Finder and right-click and select **"Open"**.



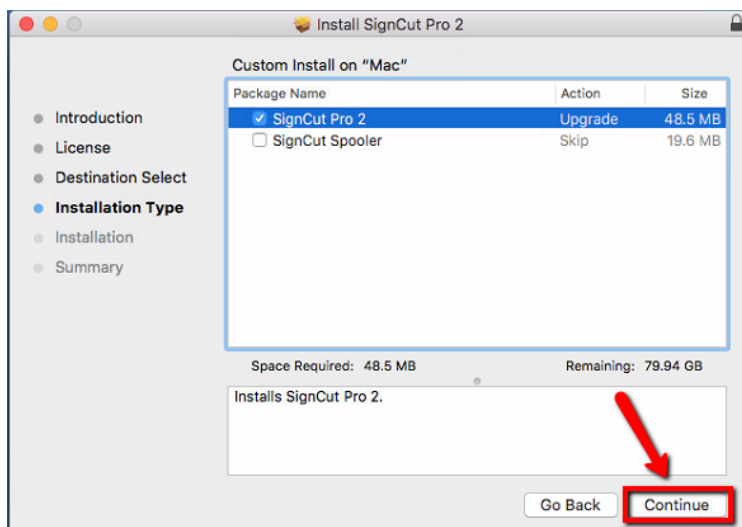
Double-click **"SignCut Pro 2.pkg"** to start the installation.



Click **"Continue"**.



Read and accept our Terms and conditions by clicking **“Continue”**.

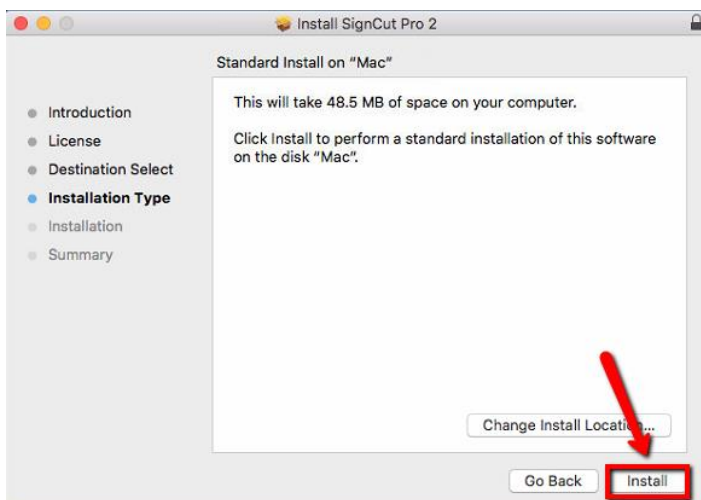


Select which component to install.

SignCut Pro 2 works for  
**Home and Student version**  
**Standard version**  
**Premium version**

SignCut Spooler works only for our  
**Premium users.**

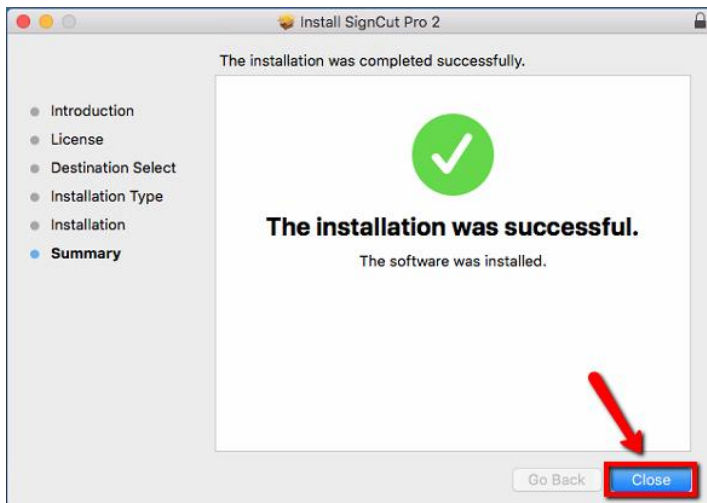
Click **“Continue”**.



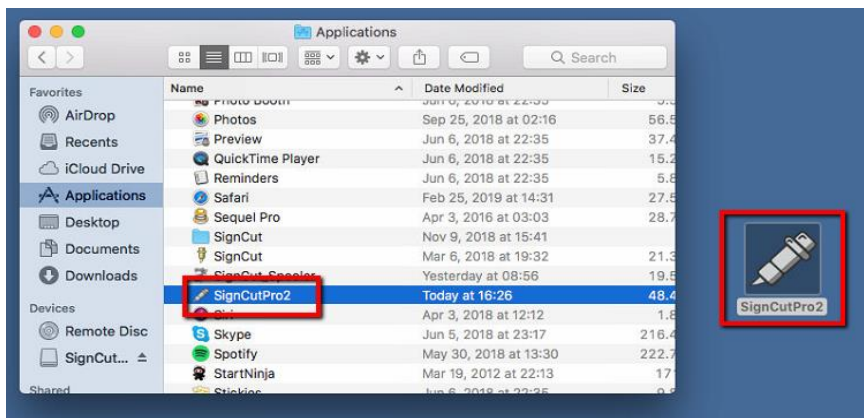
Click **“Install”**.

# SIGNCUT

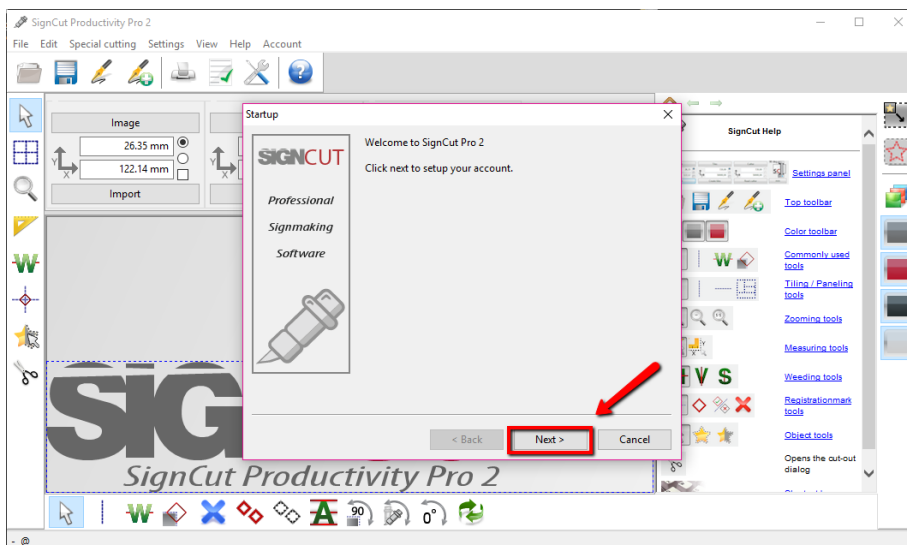
professional signmaking software



Click "Close".



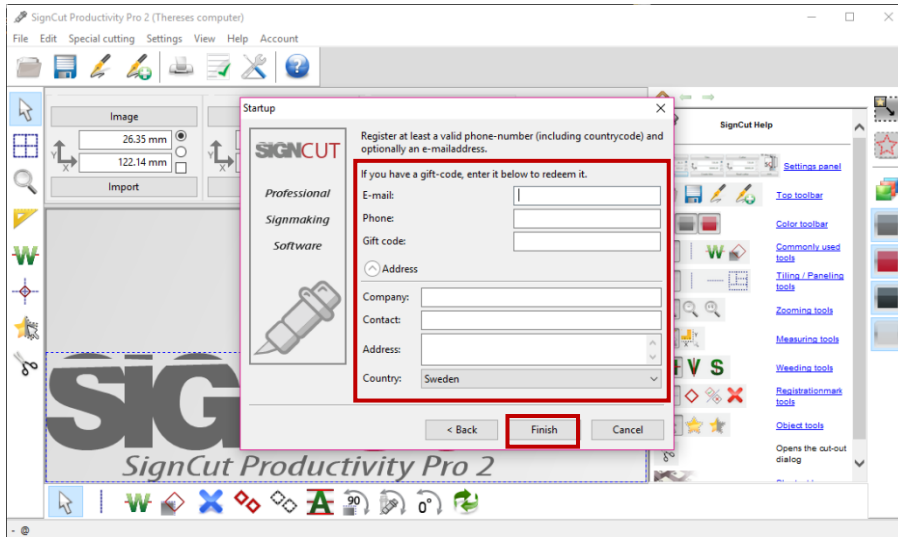
Now select SignCut on your desktop or in the Application folder and first time right click and select "Open".



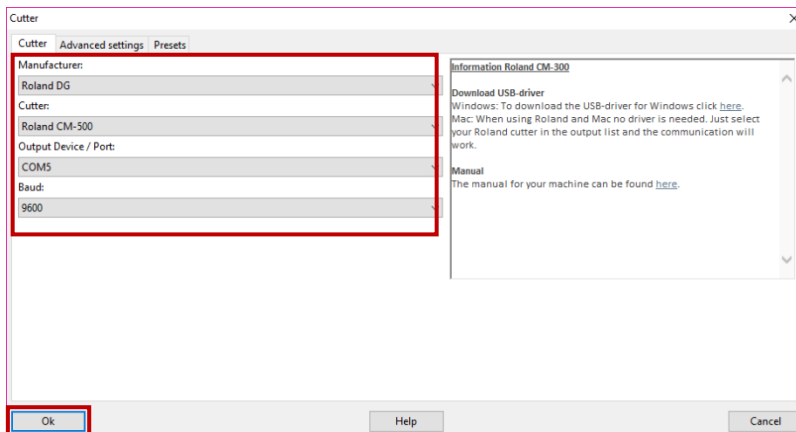
Click "Next" in the welcome screen.

# SIGNCUT

professional signmaking software



In the registration screen you enter your personal information. This is not required but needed if you want to print out a receipt later or for us to find you in our system when you contact our support. If you received a gift code from your reseller this is where you enter it. Click **“Finish”**.



Now the cutter dialogue shows up. Select your manufacturer, cutter model, output device and baud. Once done click **“Ok”** and you are now up and running with SignCut.



## Good things to know when using SignCut.

Open design

Image size

Material size

The screenshot shows the SignCut Pro 2 interface. Red boxes and arrows highlight key features: the 'Open design' icon in the top toolbar, the 'Image' and 'Cutter' panels in the center, and the 'Cut out' icon in the left toolbar. On the right, the 'SignCut Help' panel is visible, with a red box around the 'Select all colours' icon and another around the 'Colour separation' icon. The main workspace displays the 'SIGNCUT' logo and 'SignCut Productivity Pro 2' text.

Cut out

Select all colours

Colour separation

Select which colour to cut

If you want to know more about a feature in SignCut move the mouse pointer over it and a tool tip dialogue will show up. If you click the feature you will also see a short description in the built-in help in SignCut.

If you don't want the built-in help to be shown click View menu > Show help panel